

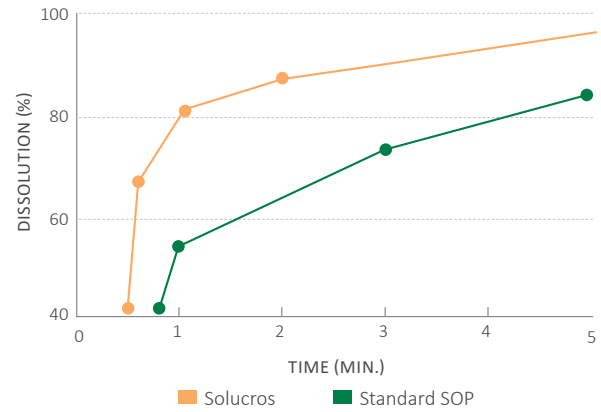


HIGH GRADE WATER SOLUBLE  
SOP FOR FERTIGATION





## DISSOLUTION SPEED OF SOLUCROS



Tessenderlo Kerley International brings a unique range of high performance liquid, solid and soluble fertilizers for more precise plant nutrition to optimize crop yield and quality sustainably.

Sulfate of potash (SOP) provides one of the mildest forms of the important plant nutrient potassium, along with sulfur. The fertilizer offers a number of important benefits over other sources of potassium, which enable it to help produce high quality crops with maximum export value, as well as to protect the environment.

### BENEFITS

- Potassium and sulfur in a readily available form
- Contains 51.5% K<sub>2</sub>O (42.7% potassium) and 47% SO<sub>3</sub> (18.7% sulfur)
- Ensures optimum uptake of both potassium and sulfur (as sulfate)
- Equal performance in alkaline or acidic soils
- Virtually no chloride
- Extremely low salt index

#### Crop quality

- Improves yield and, in many cases, the size and consistency of the produce
- Gives high quality produce
- More pigments, to give a better color and appearance
- Greater sugar content, as well as reduced acidity, which results in better flavor and aroma
- Enhances resistance to drought
- Increases resistance to damage during storage and transport

#### Ideal for fertigation

- Fast-dissolving, completely soluble SOP
- Lower pH solution improves the availability to the plant of phosphorus, iron and most other micronutrients and also helps to prevent drippers from clogging
- Compatible with most other fertilizers, except those containing calcium

### SPECIFICATIONS

- K <sub>2</sub> O (w/w)	Min. 51%
- Cl (w/w)	Max. 1%
- S (w/w)	18.7%

### TYPICAL PROPERTIES

- Appearance/color	Fine white powder
- Bulk density (struck/loose)	1.46 kg/l / 1.21 kg/l
- Angle of repose	40°
- pH (1% solution)	2.9
- Residues	0.03%
- Solubility at 25°C	120 g/l pure water
- Dissolved after 3 mins with stirring	90%
- K <sub>2</sub> O (w/w)	51.5%
- Cl (w/w)	0.6%
- SO <sub>3</sub> (w/w)	47%
- H <sub>2</sub> O (w/w)	0.02%
- Chemical formula	K <sub>2</sub> SO <sub>4</sub>

## CONTACT INFORMATION

**Our experts are familiar with your region and crops.**

**Their support includes:**

- Agronomic advice
- Providing technical information
- Carrying out field studies that are specific to your issues
- Providing application and storage tips

**For more contact information, please get in touch with:**

Tessenderlo Kerley International, part of Tessenderlo Group  
 Troonstraat 130 Rue du Trône - 1050 Brussels, Belgium  
 Tel. +32 2 639 18 11  
[tessenderlokerley@tessenderlo.com](mailto:tessenderlokerley@tessenderlo.com)  
[www.tessenderlokerley.com](http://www.tessenderlokerley.com)